

RETRIEVABLE BRIDGE PLUG



DESCRIPTION

The WYOMING COMPLETION TECHNOLOGIES “WP” is a wireline set, packer type, retrievable bridge plug capable of holding differential pressure from above or below.

FEATURES/BENEFITS

- Caged bi-directional slips
- Balanced equalizing system
- Wireline, hydraulic or coiled tubing set
- By-pass valve opens before plug is released
- Straight pull release mechanism
- Rotational safety release mechanism
- Over shot will wash to gage ring
- Optional coiled tubing retrieve
- Swab resistant packing element system
- Parts interchangeable with other manufacturers

APPLICATIONS

Temporary bridge plug for acidizing, fracturing, cementing, casing pressure tests, well head replacement and zone isolation

TECHNICAL DATA

CASING				BRIDGE PLUG	
O.D. In/mm	WEIGHT lb/ft	MIN. I.D. in/mm	MAX I.D. in/mm	SIZE	MAX O.D. in/mm
4-1/2 114.30	9.5 – 13.5	3.910	4.090	43A	3.771
		99.31	103.89		95.78
5 127.00	15 – 18	4.250	4.408	43B	4.125
		107.95	11.96		104.78
	11.5 – 15	4.408	4.560	43C	4.250
5-1/2 139.70	26	111.96	115.82	45A2	4.500
	20 – 23	4.625	4.778		
		117.48	121.36	45A4	4.641
	4.778	4.950	117.88		
6 152.40	26	4.950	5.190	45B	4.781
6-5/8 168.28	17 – 24	5.922	6.135	45G	5.781
	150.42	155.83	146.84		
7 177.80	38	5.830	5.937	47A2	5.656
		148.30	150.80		
6-5/8 168.28	17 – 20	5.938	6.135	47A4	5.812
7 177.80	32 – 35	6.136	6.276	47B2	5.968
	26 – 29				
		23 – 26	6.276	6.366	47B4
	159.41		161.70	154.38	
7 177.80	17 – 20	6.456	6.578	47C2	6.266

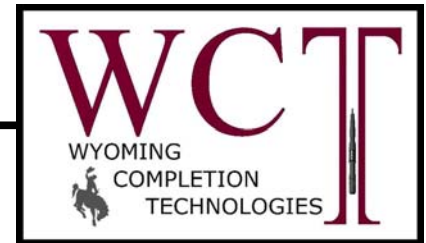
WYOMING COMPLETION TECHNOLOGIES, INC.

1110 ROAD 9 PO BOX 46
POWELL, WYOMING 82435

PHONE: (307) 754-5429 FAX: (307) 754-5927

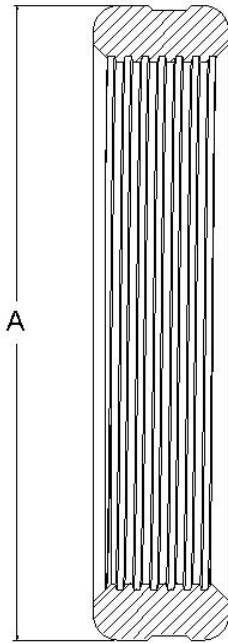
E-MAIL: hechts@directairmet.com WEB: wct.directairmet.com

RETRIEVABLE BRIDGE PLUG



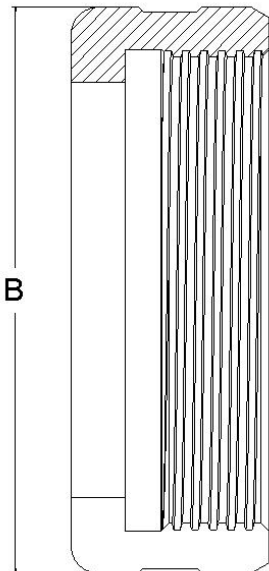
GAGE RINGS CHART

GAGE RING FIGURE



F	Part #	CSG.	WEIGHT	A
1 & 2	43WP17-A2	4-1/2"	9.5 - 13.5	3.771 3.766
1 & 2	43WP17-A4	4-1/2"	9.5	3.937 3.932
1 & 2	43WP17-B	5	15 - 18	4.125 4.120
1 & 2	43WP17-C	5	11.5 - 15	4.250 4.245
3	45WP17-A2	5-1/2"	20 - 23	4.495
3	45WP17-A4	5-1/2"	15.5 - 20	4.636
3	45WP17-B	5-1/2"	13 - 15.5	4.776
3	45WP17-E	5-1/2"	34	5.401
3	45WP17-F	5-1/2"	24 - 32	5.479
3	45WP17-G	5-1/2"	17 - 24	5.776
4	47WP17-A2	7"	38 - 40	5.651
4	47WP17-A4	7"	32 - 35	5.807
4	47WP17-B2	7"	28 - 30	5.963
4	47WP17-B4	7"	23 - 26	6.073
4	47WP17-C2	7"	19 - 20	6.276
4	47WP17-C4	7"	33.7 - 39	6.448
4	47WP17-D2	7"	26.4 - 29.7	6.67
4	47WP17-D2	7"	20 - 24	6.807

ELEMENT SPACER FIGURE



ELEMENT SPACER CHART

G	Part #	CSG.	WT.	B
5 & 6	43WP-A2	4-1/2"	9.5 - 13.5	3.771 3.766
5 & 6	43WP19-A4	4-1/2"	9.5 - 10.5	3.937 3.932
5 & 6	43WP19-B	5"	15 - 18	4.125 4.120
5 & 6	43WP-C	5"	11.5 - 15	4.250 4.245
7	45WP19-A2	5-1/2"	20 - 23	4.495
7	45WP19-A4	5-1/2"	15.5 - 20	4.636
7	45WP19-B	5-1/2"	13 - 15.5	4.776
7	45WP19-E	5-1/2"	34	5.401
7	45WP19-F	5-1/2"	24 - 32	5.479
7	45WP19-G	5-1/2"	17 - 24	5.776
8	47WP19-A2	7"	38 - 40	5.651
8	47WP19-A4	7"	32 - 53	5.807
8	47WP19-B2	7"	28 - 30	5.963
8	47WP19-B4	7"	23 - 26	6.073
8	47WP19-C2	7"	17 - 20	6.276
8	47WP19-C4	7"	33.7 - 39	6.448
8	47WP19-D2	7"	26.4 - 29.7	6.667
8	47WP19-D4	7"	20-24	6.807

WYOMING COMPLETION TECHNOLOGIES, INC.

1110 ROAD 9, PO BOX 46
 POWELL, WYOMING 82435
 PHONE: (307) 754-5429 FAX: (307) 754-5927
 HECHTS@DIRECTAIRNET.COM
 WCT.DIRECTAIRNET.COM